



Product Service

CERTIFICATE

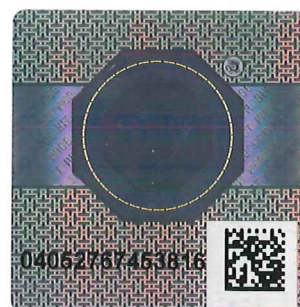
No. Z2 17 12 90658 047

Holder of Certificate: Profim Sp.z.o.o.Gornicza 8
62-700 Turek
POLAND**Certification Mark:****Product: Swivel Chairs**

The product was tested on a voluntary basis and complies with the essential requirements. The certification mark shown above can be affixed on the product. It is not permitted to alter the certification mark in any way. In addition the certification holder must not transfer the certificate to third parties. See also notes overleaf.

Test report no.: 713121968**Valid until:** 2022-12-11**Date,** 2017-12-14

Page 1 of 2

(Jens Biesenack)



CERTIFICATE

No. Z2 17 12 90658 047

Model(s): **Violle**

Parameters:

Seat is adjustable in height and depth with separate tilt adjustment and synchronous mechanism of seat surface inclination.

Backrest has a fix height and lordosis adjustment.

Armrests are adjustable in height.

Arm pads are adjustable forwards and backwards, as well as inwards and outwards.

SEAT

seat height: 390 - 530 mm, adjustable

seat depth adjustable:

VIOLLE with fully upholstered backrest: 390 - 450 mm

VIOLLE with mesh backrest: 400 - 460 mm

depth of the seat surface: 470 mm

seat width: 500 mm

tilting of the seat surface: +3° to -9°, adjustable

BACKREST

height of the back pad: 570 mm

height of the upper edge of the backrest: 600 mm, fixed

width of the backrest: min. 400 mm, max. 450 mm

horizontal radius of the backrest: >400 mm

backrest inclination: 24°

ARMREST

length of the armrest: max. 210 mm

width of the armrest: 95 mm

height of the armrests above the seat: 185 - 275, adjustable

distance from the front of the armrests to the front edge of the seat surface: 63 - 200 mm

clear width between the armrests: 435 - 510 mm

UNDERFRAME

maximal offset of the underframe: 390 mm

stability dimension: 252 mm

Tested according to:

PPP 51051A:2010

Page 2 of 2